

DYNAROADS



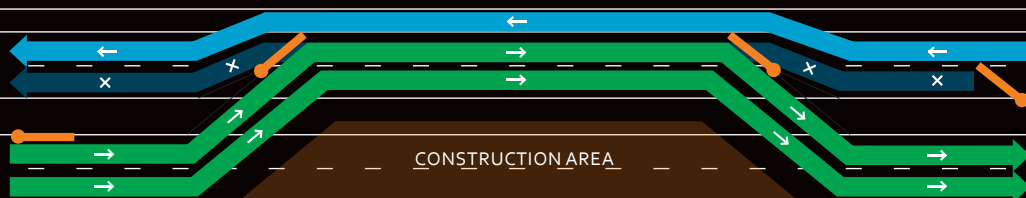
DYNASWITCH
FULLY AUTOMATIC
CONTRAFLOW MANAGEMENT

THE QUICK, EASY, SAFE AND IN SITU OPTIMISATION OF TRAFIC FLOWS

This is what DynaSwitch, the road switching system, offers. It is a movable barrier wall which allows the automatic operation of contraflow. Through the operation of a contraflow involving one or more lanes, the available road space is used optimally and the rush hour traffic flows are optimised. The length of the installation is dependent upon the project specifications, however a minimum length of 51m is recommended for optimal traffic routing. The system has both a manual and an automatic mode. If there is a power outage, DynaSwitch can be operated for several days thanks to a uninterruptible electricity supply.



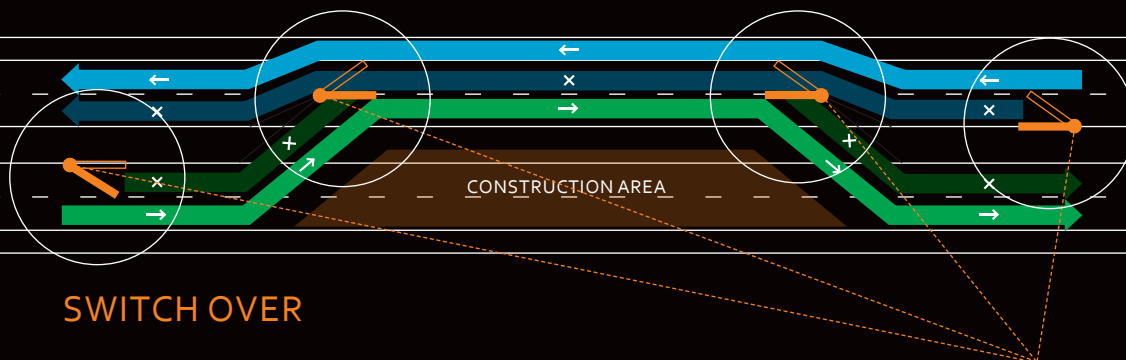
FULLY AUTOMATIC CONTRAFLOW MANAGEMENT



Two lanes open in the "green" direction of travel.

One lane open in the "blue" direction of travel.

PHASE 1



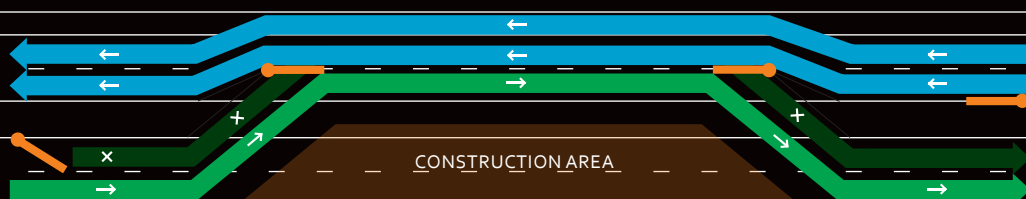
SWITCH OVER

Controlled via the internet



The switch over is fully automatic.

Temporary single lane operation in both the "green" and "blue" directions of travel.



One lane open in the "green" direction of travel.

Two lanes open in the "blue" direction of travel.

PHASE 2



SAFE AND EASY OPERATION

DynaSwitch can be easily operated in situ or conveniently and remotely operated from a traffic control centre. It therefore meets the requirements of the new German Occupational Safety Act (ASR 5.2). It states that lane switching may no longer be carried out manually on the roadway.

DIVERSE USES

DynaSwitch is suitable for roadworks or bottlenecks on busy main roads. This solution is particularly suited to “moving” roadworks. Thanks to its modular construction, the system can be easily and flexibly dismantled, moved and put back together again, including all of its cabling and control system. This also makes possible the easy maintenance and expansion of the system, as well as the replacement of component parts. DynaSwitch can also be fitted with dimmable LED running lights in intervals of 3m or with arrow signs (e.g. VZ 625 in accordance with German Road Traffic Regulations).

DYNASWITCH TECHNICAL SPECIFICATIONS

Width x height:	30 cm x 60 cm
Length:	from 51 m / according to project specifications
Restraint system (EN1317):	conforms to T3
Power supply:	3 x 230 V (16 - 25 A)
Switching time:	approx. 3 mins

MOVING TRAFFIC SOLUTIONS

DYNAROADS

Zugerstrasse 30
CH-6340 Baar
info@dynaroads.com
Phone +41 (0)79 171 06 36