

DYNAROADS



DYNARESC "8.8M"

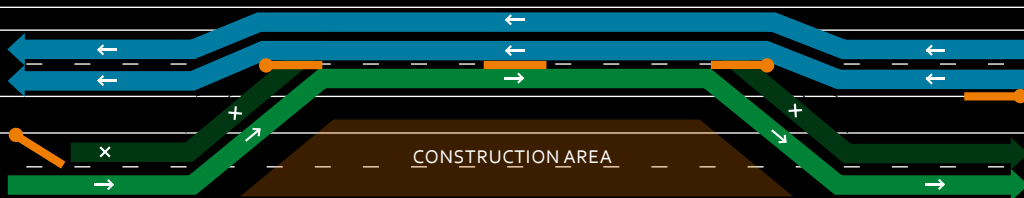
**A FAST-OPENING SLIDING BARRIER
FOR EMERGENCY SERVICES**

DYNARESC "8.8 M" IS AN EMERGENCY OPENING SYSTEM FOR TEMPORARY BARRIER WALLS.

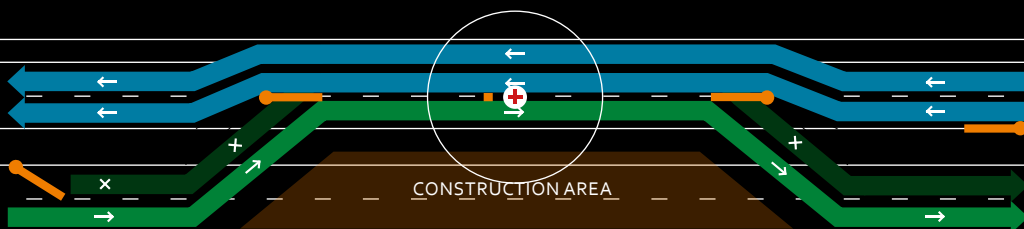
A space-saving gateway for temporary barrier wall systems in continuous use that can be opened for police, rescue and recovery services or disaster control organisations. DynaResc is a sliding barrier integrated into the barrier wall. DynaResc uses an opening width of 8.8m to allow vehicles to pass through. The sliding barrier can be opened with the aid of a crank handle or a cordless screwdriver.



FAST-OPENING SLIDING BARRIER



CLOSED



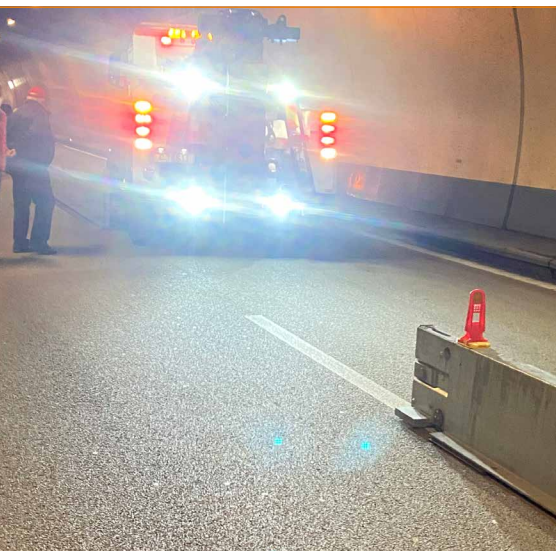
OPEN

The sliding barrier opens the way between the two lanes.



DYNARESC "8.8 M" TECHNICAL SPECIFICATIONS

Width x height:	30 cm x 52 cm
Length:	24 m
Size of opening	8.8 m
Restraint system (EN1317):	T3



MOVING TRAFFIC SOLUTIONS

DYNAROADS

Zugerstrasse 30
CH-6340 Baar
info@dynaroads.com
Phone +41 (0)79 171 06 36