

**DYNAROADS**



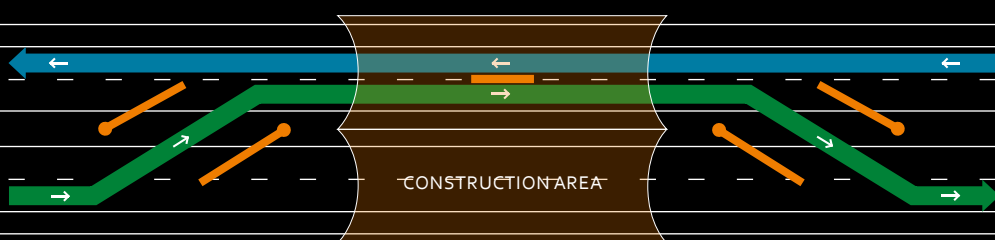
**DYNARESC** "1.6M AUTO"

**A FAST-OPENING SLIDING BARRIER  
FOR EMERGENCY SERVICES**

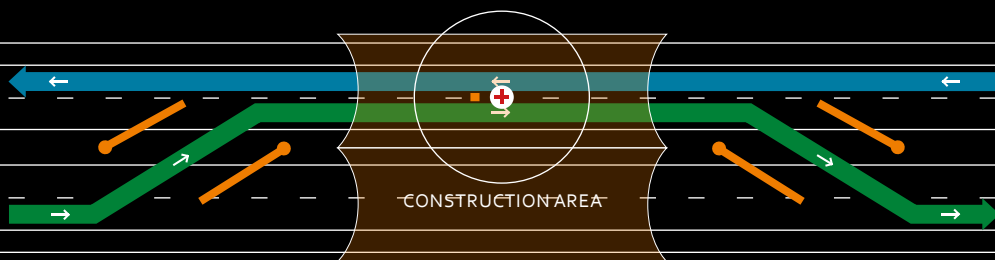
# DYNARESC "1.6M AUTO" IS AN EMERGENCY OPENING SYSTEM FOR DISABLED USERS.

DynaResc "1.6m auto" was designed so that disabled people could easily access the emergency tunnels in road tunnels with separated traffic flows. DynaResc is a sliding barrier integrated into the barrier wall. With an opening of 1.6m, people can be quickly evacuated from the roadway. DynaResc opens automatically via the "press of a button".

## FAST-OPENING SLIDING BARRIER

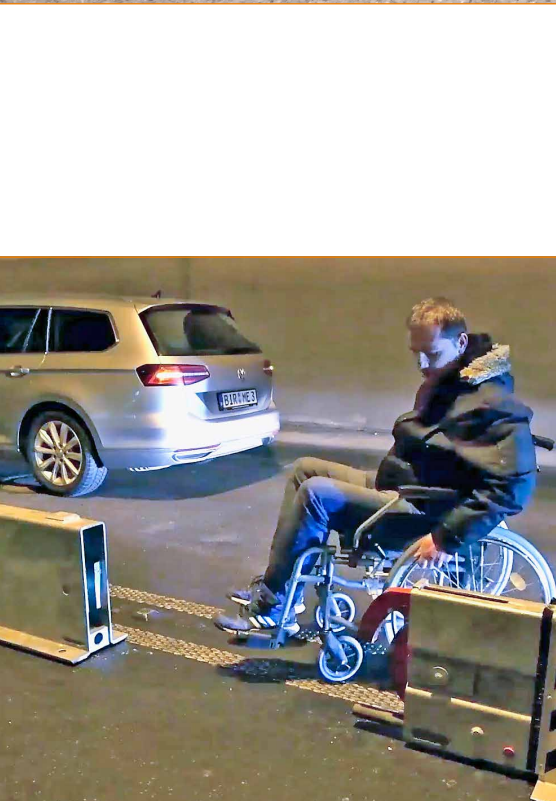


CLOSED



OPEN

The sliding barrier opens the way between the two lanes.



## DYNARESC "1.6 M AUTO" TECHNICAL SPECIFICATIONS

Width x height:	30 cm x 52 cm
Length:	12 m
Size of opening:	1.6 m
Restraint system (EN1317):	T3

# MOVING TRAFFIC SOLUTIONS

**DYNAROADS**

Zugerstrasse 30  
CH-6340 Baar  
info@dynaroads.com  
Phone +41 (0)79 171 06 36