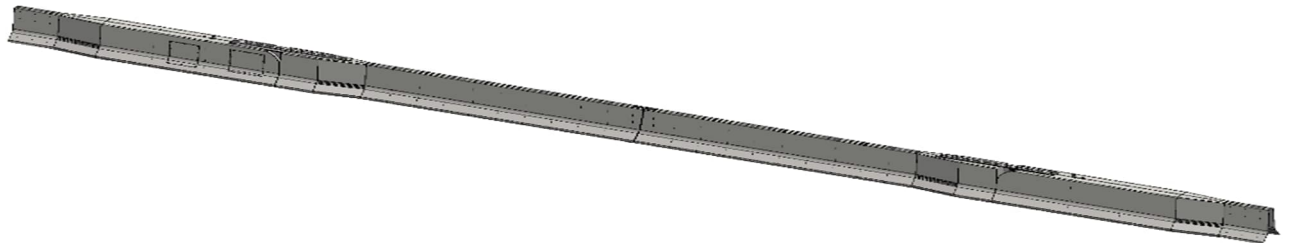


Data sheet «DynaRise double 9m»



Containment level: H2/W3

Foundation: 1.2 m x 1.2 m x 3 m, C37 reinforced

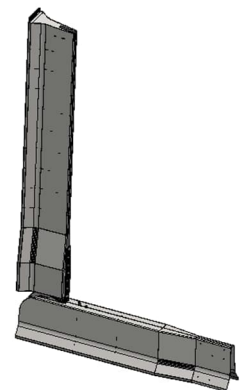
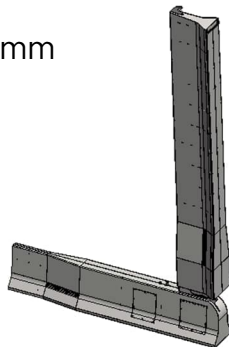
Clear width: 9 m

Total length: approx. 16 m+ transition (variable acc. to customer requirements)

Width: 640 mm

Height: 800 mm

Opening angle: 92°



Connection power: 16A / 10 kW (3-pole)

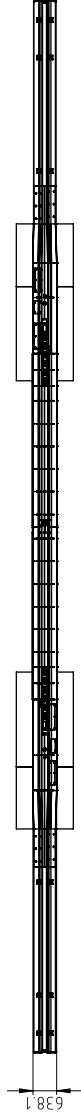
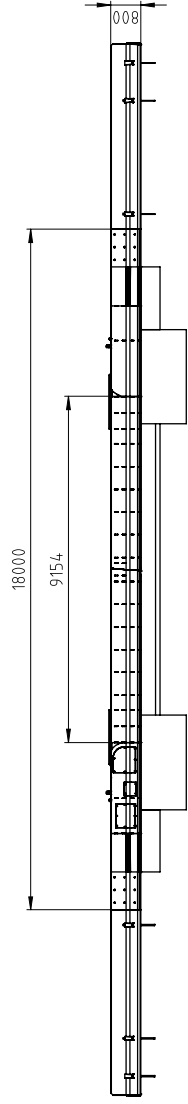
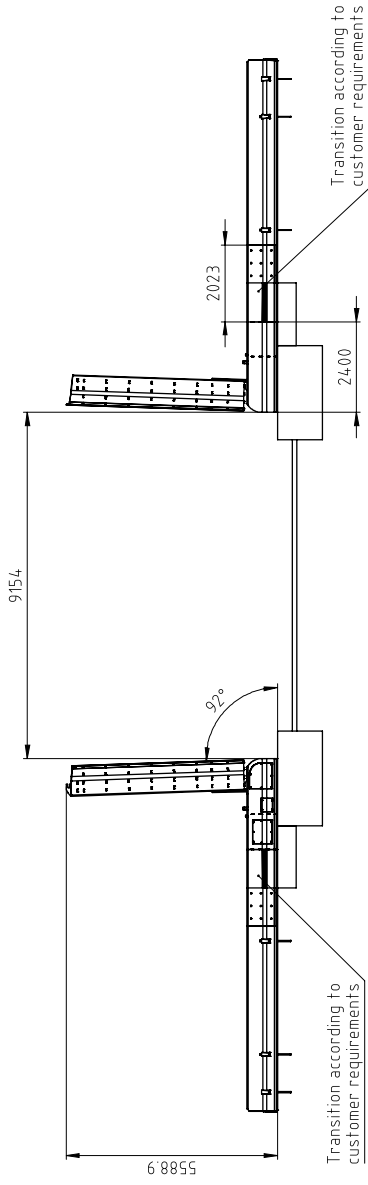
Voltage: 220 / 400V

Battery emergency operation: 48V

Options:

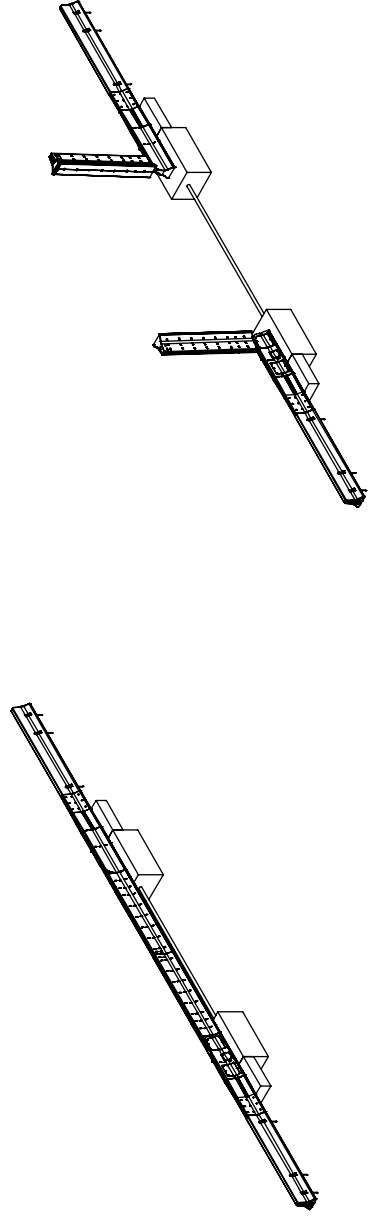
Camera surveillance

Induction loop (occupancy detection)



(1:150)

(1:150)



PROJEKT	PROJEKT-NR.	PROJEKT-GRUPPE	PROJEKT-STATUS
	3504664	0-Montageplanung	-
DynaRise Double Layout			
DYNARISE AS, OLAVS BOMAR www.dynarise.com			
DATE	DATE	DATE	DATE
15.02.2025	15.02.2025	15.02.2025	15.02.2025
DESIGNER	CHECKER	APPROVER	SCALE
			1:1
PROJEKTLEITER	PROJEKTLEITER	PROJEKTLEITER	PROJEKTLEITER
DYNARISE AS, OLAVS BOMAR			00a
www.dynarise.com			